

CORPORATE
BROCHURE
2021



The future is in your hands

Metal Powders

ITALIAN MANUFACTURER

Company Profile

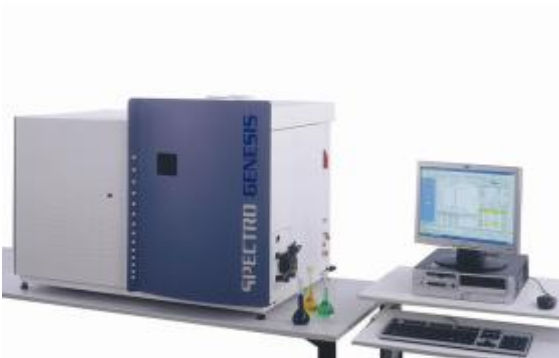
MEPOSO is a brand of LINBRAZE, the leading manufacturer of metal powders, granules and brazing pastes for brazing, soldering and braze-welding, specializing in the technologies of metal atomization and post atomization, in the development and production of innovative products, such as non-ferrous and precious metal powders of high quality needed for a wide range of industrial technology applications. MEPOSO is strongly focused in the field of component manufacturing for automotive industry, powder metallurgy, metal injection molding, surface coatings, diamond tools, metallic fillers, tool-making, cold cast applications, architectural applications, sculptures, dusting, printing inks, screen-printing, coatings on paper or foil substrates, industrial paints, decorative paints, antifoul paint



Through continuous investment in research and development and through an established network of relationships with the top international research centers, MEPOSO has developed a technological and manufacturing leadership globally recognized: a record evidenced by the partnerships signed with leading global players in the automotive, military, heating, aeronautic, nuclear, etc.



MEPOSO, immersed in the green of the Sicilian hills, takes seriously the management of the environment and the social responsibility by engaging conscientiously to develop renewable products, through innovation and sustainable improvement of production processes.



Vision

To listen, and meet the needs of our customers, driving them to the excellence as market leader, helping them sell better. Bringing every day in their company the security of an advanced product and the joy of receiving tailor-made solutions, simple and innovative, with the use of professional competencies certified and diversified by offering a constant support and an efficient service.



Technological innovation

MEPOSO employs a team of skilled technicians for the development of new products and technologies, and capable of providing a fair level of technical support at zero cost. The continuous investment in technological innovation, the thirty years of experience and a high degree of specialization of the company's technical resources are our strengths to create and maintain competitive standards of quality and of efficiency that make us unique in the market of pastes and of metal powders.

Top Quality

MEPOSO continues to offer higher quality, a wider choice of products, the highest performance, added value services, technological superiority and an excellent relationship between supply and price. Within our manufacturing and before shipment to the customer, raw materials, semi-finished and finished products are tested through different levels of analysis and quality testing. Observing and complying with the requirements of the customer is the key part of MEPOSO trade policy, helping to avoid potential increases in costs and the onset of inconvenience is our daily concern. The MEPOSO production provides internal quality standards that far exceed international regulations ISO, AWS, EN.

Mission

Applying the innovative technology of metal powders and pastes to help our customers to solve global challenges. Our valuable proposition provides innovative and sustainable solutions, designed to help our customers improve productivity, to reduce costs and mitigate risks. MEPOSO believes in the Italian industrial model (Made in Italy) that combines elements of superior quality and simple solutions, offering a thirty-year experience in the field of powder metallurgy and brazing. Our sense of belonging, courage and intellectual curiosity inspire our way of being and identify the people with whom we work. MEPOSO continues to expand its international presence, engineering products and the expertise of the service, always binding its development to the satisfaction of its customers.



Metal Powders

With thirty years of experience in the production of metal powders, MEPOSO, through production facilities that meet in a reactive way any kind of requirement for quality and quantity of the product, and to provide adequate flexibility to produce special powder alloys with unique chemical, satisfying the customer requests by type, shape and particle size.

Focused on meeting the needs of it's customers, MEPOSO uses a variety of techniques for the production of metal powders, chosen specifically for customer needs.

MEPOSO powder production equipment: melting and casting furnaces, atomizer chambers, tundishes, nozzle systems, powder collectors, particle seperators, cyclone and Venturi transport systems, mixing stations and filling stations.



Manufacture of Metal Powders

MEPOSO powders are tailor made, produced and developed, on the customer requirements, each MEPOSO powder is manufactured with a specific technique of production:

Air Atomized Powder

The metal powders obtained through air atomization are used for various applications in many industrial sectors, and are produced on specifically client request. Through the use of the air atomization process, the solidification of the particles is slower and for this the particle, having more time, tends to reach the spherical shape.

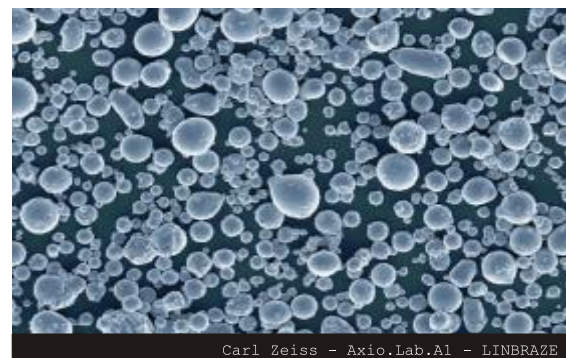


Water Atomization

This technique is used for the production of powders with irregular shape, that ensuring a much larger surface area, excellent compressibility and green strength at moderate compacting pressures. This powders are generally used in applications of chemical reaction, as for sintering, and in numerous industrial sectors.

Gas Atomization

This method of production involves the advantages of use of low amount of oxygen, of obtaining highly spherical powder and allows to produce powders for use highly challenging and specialized. Our gas atomized powders are used in various industries as well as for brazing, thermal spray and surface coating industries.



Electrolytic Powders

With the electrolytic method you get a no consistent powder that shatters easily by mechanical action, characterized by a very irregular shape and very high surface area. The powders are used for various applications and have a high purity, good thermal and electrical conductivity, good behavior in the pressing and sintering.

Air Atomized Copper Powders (Spherical shape)

Grade	Composition	Apparent density	Grain size
COPPER MS	Cu 100%	4,0 - 5,8 g/cm ³	Upon request
COPPER SS	Cu 100%	4,7 - 5,0 g/cm ³	-75 μm -200 #
COPPER SX	Cu 100%	2,8 - 3,5 g/cm ³	-45 μm -325 #

Water Atomized Copper Powders (Irregular shape)

Grade	Composition	Apparent density	Grain size
COPPER WM	Cu 100%	3,0 - 3,5 g/cm ³	-75 μm -200 #
COPPER WSS	Cu 100%	2,0 - 2,5 g/cm ³	-63 μm -250 #
COPPER WSX	Cu 100%	1,2 - 1,5 g/cm ³	-45 μm -325 #

Electrolytic Copper Powders (Dendritic shape)

Grade	Composition	Apparent density	Grain size
CU-EP-2245	Cu 100%	1,2 g/cm ³	-45 μm -325 #
CU-EP-3363	Cu 100%	1,3 g/cm ³	-63 μm -250 #
CU-EP-5563	Cu 100%	1,5 g/cm ³	-63 μm -250 #
CU-EP-77100	Cu 100%	1,7 g/cm ³	-100 μm -150 #
CU-EP-9980	Cu 100%	1,9 g/cm ³	-75 μm -200 #

Air Atomized Brass Powders

Grade	Composition	Apparent density	Grain size
BRASS NS	Cu bal.% - Zn 18% - Ni 18%	2,8 - 3,4 g/cm ³	Upon request
BRASS 200	Cu bal.% - Zn 20% - Si 0,2%	2,8 - 3,4 g/cm ³	Upon request
BRASS 700	Cu bal.% - Zn 30% - Si 0,2%	2,8 - 3,4 g/cm ³	Upon request
BRASS 330	Cu bal.% - Zn 33% - Si 0,2%	2,8 - 3,4 g/cm ³	Upon request
BRASS 600	Cu bal.% - Zn 40% - Si 0,2%	2,8 - 3,4 g/cm ³	Upon request
BRASS 303	Cu bal.% - Zn 40% - Si - Sn	2,8 - 3,4 g/cm ³	Upon request
BRASS 305	Cu bal.% - Zn 42% - Ni 10%	2,8 - 3,4 g/cm ³	Upon request
BRASS 306	Cu bal.% - Zn 40% - Sn 1% - Ni	2,8 - 3,4 g/cm ³	Upon request
BRASS 520	Cu bal.% - Zn 48% - Si 0,2%	2,8 - 3,4 g/cm ³	Upon request
BRASS 550	Cu bal.% - Zn 45% - Si 0,2%	2,8 - 3,4 g/cm ³	Upon request

Irregular Bronze Powders

Grade	Composition	Apparent density	Grain size
BRONZE UD	Cu 90% - Sn 10%	2,8 - 3,5 g/cm ³	-75 μm -200 #
BRONZE UDX	Cu 90% - Sn 10%	2,8 - 3,4 g/cm ³	-45 μm -325 #
BRONZE UC	Cu 89% - Sn 11%	2,8 - 3,5 g/cm ³	-75 μm -200 #
BRONZE UCX	Cu 89% - Sn 11%	2,8 - 3,5 g/cm ³	-45 μm -325 #
BRONZE UP	Cu 85% - Sn 15%	3,0 - 3,8 g/cm ³	-75 μm -200 #
BRONZE UPX	Cu 85% - Sn 15%	3,0 - 3,8 g/cm ³	-45 μm -325 #
BRONZE UV	Cu 80% - Sn 20%	3,2 - 3,8 g/cm ³	-75 μm -200 #
BRONZE UVX	Cu 80% - Sn 20%	3,2 - 3,8 g/cm ³	-45 μm -325 #
BRONZE UT	Cu 70% - Sn 30%	3,2 - 3,8 g/cm ³	-75 μm -200 #
BRONZE UTX	Cu 70% - Sn 30%	3,2 - 3,8 g/cm ³	-45 μm -325 #
BRONZE 40 L	Cu 60% - Sn 40%	3,5 - 4,5 g/cm ³	Upon request
BRONZE 50 L	Cu 50% - Sn 50%	3,3 - 3,9 g/cm ³	Upon request

Spherical Bronze Powders

Grade	Composition	Apparent density	Grain size
BRONZE 4	Cu 96% - Sn 4%	3,5 - 4,9 g/cm ³	Upon request
BRONZE 6	Cu 94% - Sn 6%	3,5 - 4,9 g/cm ³	Upon request
BRONZE 8	Cu 92% - Sn 8%	3,5 - 4,9 g/cm ³	Upon request
BRONZE 10	Cu 90% - Sn 10%	3,5 - 4,9 g/cm ³	Upon request
BRONZE D	Cu 90% - Sn 10%	3,5 - 4,9 g/cm ³	Upon request
BRONZE S	Cu 88% - Sn 10% - Zn 2%	3,5 - 4,9 g/cm ³	Upon request
BRONZE 11	Cu 89% - Sn 11%	3,5 - 4,9 g/cm ³	Upon request
BRONZE 12	Cu 88% - Sn 12%	3,5 - 4,9 g/cm ³	Upon request
BRONZE 15	Cu 85% - Sn 15%	3,5 - 4,9 g/cm ³	Upon request
BRONZE 20	Cu 80% - Sn 20%	3,5 - 4,9 g/cm ³	Upon request
BRONZE 25	Cu 75% - Sn 25%	3,5 - 4,9 g/cm ³	Upon request
BRONZE 40	Cu 60% - Sn 40%	3,5 - 4,9 g/cm ³	Upon request
BRONZE 50	Cu 50% - Sn 50%	3,5 - 4,9 g/cm ³	Upon request
BRONZE W	Cu 96% - Sn 24% - Zn16%	3,5 - 4,9 g/cm ³	Upon request

Atomized Copper-Phosphorus Powders

Grade	Composition	Apparent density	Grain size
RO 180	Cu bal.% - P 7%	4,0 - 4,8 g/cm ³	Upon request
RO 140	Cu bal.% - P 14%	3,0 - 4,4 g/cm ³	Upon request
RO 386	Cu bal.% - P 7% - Sn 7%	3,8 - 4,5 g/cm ³	Upon request
RO 282	Cu bal.% - P 7% - Ag 5%	3,6 - 4,2 g/cm ³	Upon request
RO 286	Cu bal.% - P 7% - Ag 18%	3,6 - 4,2 g/cm ³	Upon request

Atomized Lead-Bronze Powders (Spherical shape)

Grade	Composition	Apparent density	Grain size
BRONZE PY	Cu bal.% - Sn 10% - Pb 10%	4,6 - 5,9 g/cm ³	-150 μm - 100 #
BRONZE PP	Cu bal.% - Sn 2% - Pb 28%	4,6 - 5,9 g/cm ³	-150 μm - 100 #
BRONZE PL	Cu bal.% - Pb 33%	4,6 - 5,9 g/cm ³	-150 μm - 100 #
BRONZE PK	Cu bal.% - Sn 1,7% - Pb 25%	4,6 - 5,9 g/cm ³	-150 μm - 100 #
BRONZE PX	Cu bal.% - Sn 5% - Pb 25%	4,6 - 5,9 g/cm ³	-150 μm - 100 #
BRONZE RSX	Cu bal.% - Sn 4% - Pb 23%	4,6 - 5,9 g/cm ³	-150 μm - 100 #

Air Atomized Silver Powders

Grade	Composition	Apparent density	Grain size
AG-SF-7750	Ag 100 %	4,4 - 4,9 g/cm ³	-53 μm - 270 #
AG-SF-5563	Ag 100 %	4,4 - 4,9 g/cm ³	-63 μm - 250 #
AG-SF-66100	Ag 100 %	4,4 - 4,9 g/cm ³	-106 μm - 150 #
AG-SF-44150	Ag 100 %	4,4 - 4,9 g/cm ³	-150 μm - 100 #

Electrolytic Silver Powders (Dendritic shape)

Grade	Composition	Apparent density	Grain size (D50)
AG-EP-3015	Ag 100 %	2,0 - 4,0 g/cm ³	-15 μm - 800 #
AG-EP-4015	Ag 100 %	3,0 - 4,5 g/cm ³	-15 μm - 800 #
AG-EP-1720	Ag 100 %	1,0 - 2,5 g/cm ³	-20 μm - 625 #
AG-EP-2020	Ag 100 %	1,5 - 3,0 g/cm ³	-20 μm - 625 #
AG-EP-1715	Ag 100 %	1,0 - 2,5 g/cm ³	-15 μm - 800 #
AG-EP-2110	Ag 100 %	1,2 - 2,8 g/cm ³	-10 μm - 1250 #

Special Metal Powders

Grade	Composition	Apparent density	Grain size
SN-SF-75	Sn 99,98%	3,5 - 4,5 g/cm ³	-75 μm -200 #
ZN-SF-75	Zn 99,97%	2,7 - 3,2 g/cm ³	-75 μm -200 #
NIP 20 EF	Ni bal% - P 18 - 21%	2,8 - 3,2 g/cm ³	- 106 μm -140 #
FERCA 3	Fe bal % - C 0,03%	3,4 - 4,4 g/cm ³	-20 μm -625 #
FEP 23	Fe bal % - P 19-23%	2,4 - 3,4 g/cm ³	-75 μm -200 #
FE CU 30	Fe 70 % - Cu 30 %	2,8 - 3,6 g/cm ³	-75 μm -200 #
FE CU 40	Fe 60 % - Cu 40 %	3,0 - 3,8 g/cm ³	-75 μm -200 #

Powder Particle Size Converter

This chart shows cross references among various units of measure for powder particle sizes.

Size in Mycrons	Size in Inches	U.S. Standard Mesh Size	Tyler Mesh Size	British Standard Mesh Size
15			800 theoretical	
20			625 theoretical	
25			500 theoretical	
33	.0013	425		
38	.0015	400		
45	.0017	325	325	
53	.0021	270	270	300
63	.0025	230	250	
66	.0026			240
75	.0029	200	200	
90	.0035	170	170	170
106	.0041	140	150	150
125	.0049	120	115	120
147	.0058		100	
150	.0059	100		
152	.0060			100
175	.0069		80	
180	.0070	80		85
208	.0082		65	
212	.0083	70		72

Customer's Care & Satisfaction

MEPOSO 's objective is to help the customers around the world to discover new ways to save on overall costs, improving the quality of their brazing processes thus improving the quality of their parts produced using our materials. MEPOSO supports the customers through the study of their latent or emerging needs, the creation and the development of products/services capable to meet their requests. MEPOSO is concentrated on offering transparent, effective and understandable communication to the customers. Understanding what is important to our customers gives us the opportunity to bring to them the solutions most suited to their needs.

Our objective is to propose the superior quality of MEPOSO in terms of product, service, technical assistance and technology, presenting a business proposal with the right solutions in terms of optimization of the costs incurred by the customer.

Our customer service speaks English, Italian, Spanish, France and German.



Guidance to the Solution

MEPOSO by LINBRAZE provides its customers with simple and innovative solutions tested in our labs before being proposed to them.

Our consultative approach is focused to resolve problematic issues and improve production processes of our customers.

For more information about our solutions, for your industry, please contact us at the Headquarter :

MEPOSO by LINBRAZE S.r.l.
C/da Torre Chimera - Sp180
93019 Sommatino (CL) ITALY

Tel: +39 0922 871 694
Fax: +39 0922 709 064
E-mail: info@meposo.com
Web: www.meposo.com



Timely Delivery Service

MEPOSO offers its customers a timely delivery service. By having centralized our manufacturing and our warehouse in our headquarters in Italy, we have the ability to manage with flexibility and immediacy the urgent requirements. Efficient services of logistics and transport with immediate availability in stock, make MEPOSO a partner flexible, secure and reliable.



Worldwide Distribution

MEPOSO is present in several countries in the world with agencies, direct and indirect. Contact us for more information about the point of sale nearest you.





MEPOSO by LINBRAZE
C/da Torre Chimera - Sp180
93019 Sommatino (CL) - Italy
Tel. +39 0922 871 694 - Fax +39 0922 709 064
www.meposo.com